

3PA/3PB Series

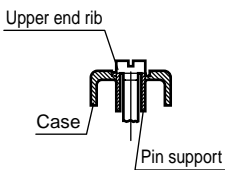
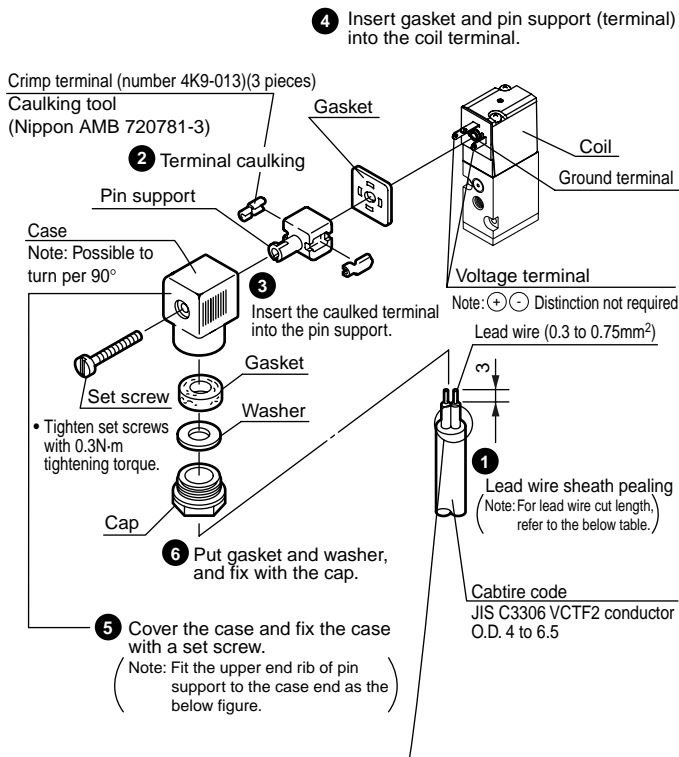
Technical data 1) How to wire terminal box/connector

How to wire terminal box/connector

When wiring small terminal box and C or D connector, refer to the diagram below.

How to wire small terminal box (3P*1B)

Wire according to procedures of ① to ⑥.

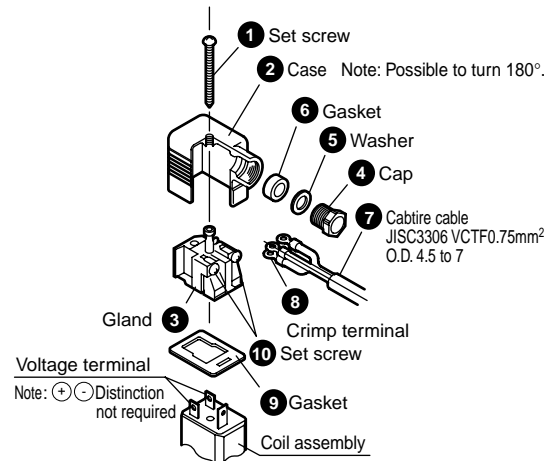


	When case direction is as same as or turns 180° from the position of above figure.	When case direction turns 90° clockwise or counterclockwise from the position of above figure.
Lead wire length	8	13

How to wire terminal (3P*2B, L, LS)

For terminal box, refer to the following diagram and follow the procedures of 1) to 3).

- Put Cap ④, Washer ⑤ and Gasket ⑥ through Cabtire cable ⑦ in turn, and insert them into Case ②.
 - When using crimp terminal, arrange Cabtire cable ⑦ as the diagram with the proper length, and crimp the Crimp terminal ⑧ at the end of cable.
 - Remove Set screw ⑩ from Gland ③, put the cable through Crimp terminal ⑧ (when Y shaped terminal, loosen the terminal and pinch the cable), then tighten Set screw ⑩ again.
- (Note) Tightening torque should be within 0.5Nm ±15%.



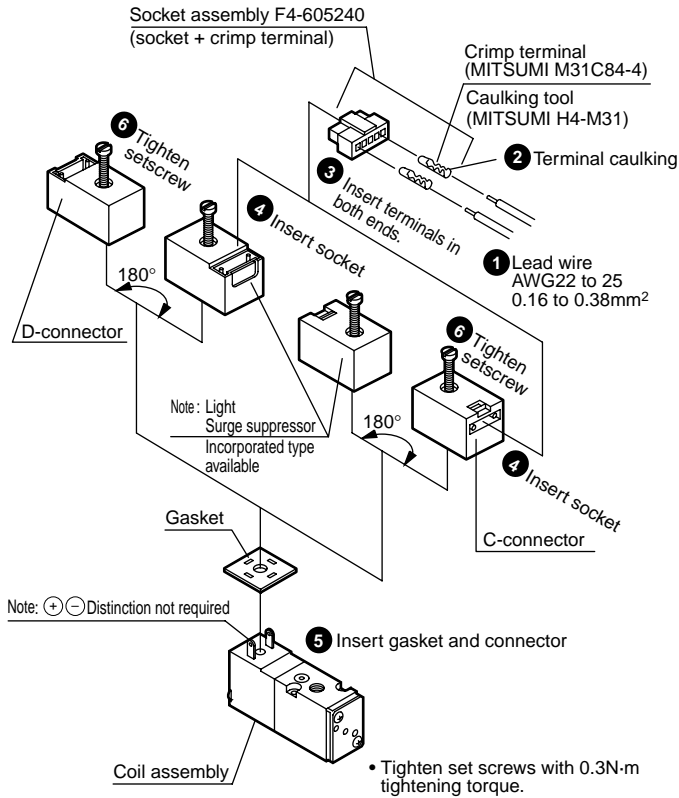
- Remarks:
- A bared wire can be wired. In this case, loosen Set screw ⑩, put the lead wire in the bracket, then tighten the set screw again.
 - Pull the gland from the case, turn the gland 180° then push the gland into the case again to change the direction of lead wire outlet.
 - Use Crimp terminal ⑧ listed on the below table.

NICHIFU		FUJI TERMINAL INDUSTRY CO. LTD.		JST MFG CO. LTD.	
O Terminal	Y Terminal	O Terminal	Y Terminal	O Terminal	Y Terminal
0.3-3	0.3-3	1.25-3	1.25-YAS3	0.5-3	0.25-B3A
1.25-3	1.25Y-3		1.25-YAS3.5	1.25-3	1.25-C3A
1.25-3S	1.25Y-3.5				

When using other makers' product, an equivalent one should be used.

How to wire C type/D-connector (3P*1/3P*2)

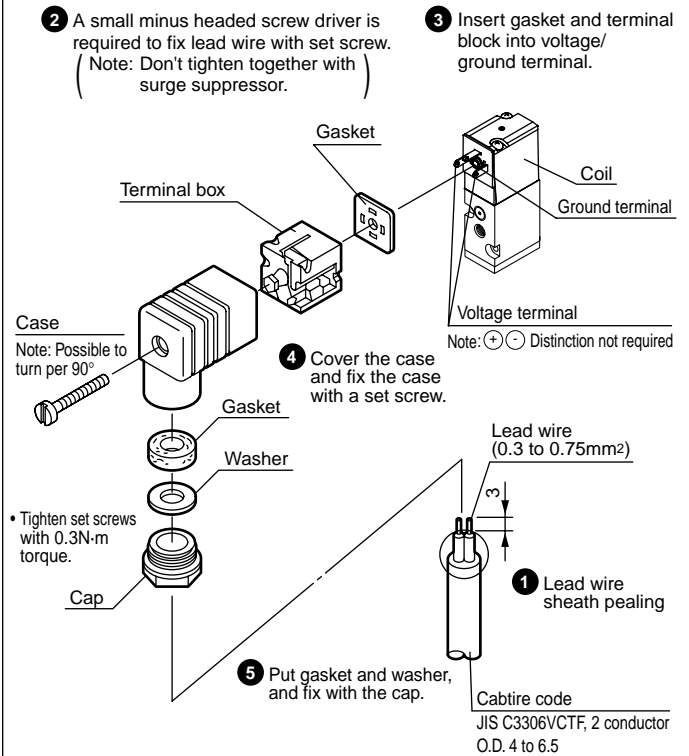
Wire according to procedures of ① to ⑥.



When indicator light of DC24V, power consumption of 2.0W is reduced by 1.8W.

How to wire small terminal box with light (3P*1L, LS)

Wire according to procedures of ① to ⑤.



4SA/B0

4SA/B1

4GA/B

MN4GA/B

4GA/B (master)

MN3S0/ MN4S0

4TB

4L2-4/ LMFO

4KA/B

4F

PV5/ CMF

3MA/B0

3PA/B

P/M/B

NP/NAP/ NVP

4F**0E

HMV/ HSV

Uniwire system

SKH

PCD/ FS/FD

3 port direct acting valve